

Product Catalog

Neovanta Medical



Neoventa Medical

Neoventa Medical provides fetal & maternal monitoring solutions and educational programs for obstetric care. The Stan S41 Maternal and Fetal monitor, is a compact and portable CTG device that can be configured according to customer needs. Fetal ST Analysis, Neoventa's unique method, is used as an adjunct to CTG, and provides a more detailed picture of the fetal state during labor. Neoventa also provides Goldtrace, a disposable fetal scalp electrode.

Table of Content

4 Stan S41 – Maternal and Fetal Monitor

5 Add-Ons for Stan S41

7 Transducers for Fetal Monitoring

10 Accessories for Internal Fetal Monitoring

12 Accessories for Maternal Monitoring

14 Consumables

15 Accessories for External Maternal Monitoring
Printer Paper

16 Mounting Solutions – Trolleys

17 Accessories for Trolleys

18 Mounting Solutions – Wall Arms

19 Accessories for Wall Arms

20 Softwares

21 Instructions for Use
Service Manual

22 Quick Guides

Stan S41 – Maternal and Fetal Monitor

Main Unit

Provides external monitoring of maternal and fetal parameters and CTG analysis for antenatal screening (STV, Fischer, Krebs, CST, NST).

The monitor has a 12.1" touchscreen with CTG trace displayed on screen, with a possible 70-degree position variation. It includes a built-in, high resolution and thermal printer.

Stan Viewer software is included, for retrospective reviewing of trace recordings.



Note: The monitor in the picture includes the Wireless Monitoring Upgrade Kit (Aqua) (see 4/SYS120400).

Article Number: SYS120400

Includes:



Note: The monitor in the picture includes the Wireless Monitoring Upgrade Kit (see 3/SYS120400).

- 1 Wired FHR Transducer
- 1 Wired TOCO Transducer
- 1 Wired FM marker
- 1 Transducer Belt 2 pcs
- 1 Printing Paper 3 folds/box
- 1 3-leadwire MEEG leadset cable
- 1 MEEG electrode snap connector 25 pcs
- 1 NIBP Cuff Adult
- 1 NIBP Cuff Large Adult
- 1 NIBP cuff extension cable
- 1 MSpO2 sensor
- 1 MSpO2 extension cable
- 1 Power cord
- 1 Instructions For Use
- 1 Service Manual
- 1 Quick Guide
- 1 Stan Viewer installation instruction

Add-Ons for Stan S41

Internal Fetal Monitoring

Provides the function of internal fetal heart rate registration. Validated for Goldtrace Fetal Spiral Electrode (FSE). Also provides the function of intra-uterine pressure registration (IUP).

Factory installed.

This add-on prepares the S41 for fetal ST Analysis.

Article Number: 1/SYS120400

Includes:

1 FECG Legplate Adapter for Neoventa

Fetal ST Analysis

Provides the function of fetal ST Analysis. Registering, measuring and analyzing the fetal ECG changes based on the oxygen levels in the fetus circulation, from gestation week 36+0.

Prerequisites:

Internal Fetal Monitoring (1/SYS120400)

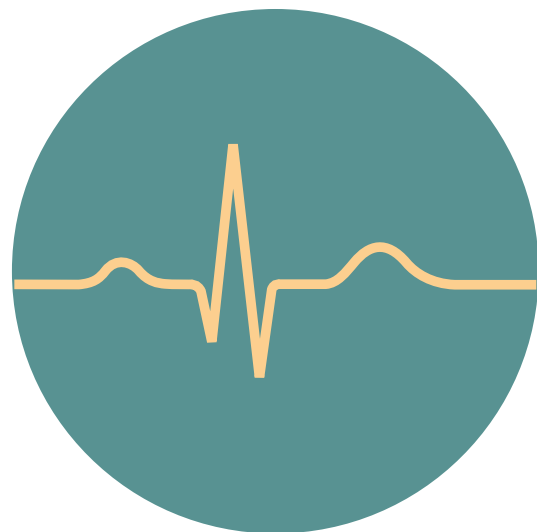
Includes:

1 ST Analysis License

3 Printing paper fetal ST Analysis

1 Clinical Guidelines

Article Number: 2/SYS120400



Rechargeable System Battery

System battery for Stan S41. Providing uninterruptible power for approximately 3 hours (5000mAh).

Charging time: Maximum 6 hrs

Article Number: P4910-00023

Includes:

1 Rechargeable system battery Li-ion

Add-Ons for Stan S41

Wireless Monitoring Upgrade Kit

Article Number: 3/SYS120400

The wireless transducers offer mobility during labor, with continuous CTG monitoring. It can also be used during indoor transport situations in healthcare facilities.

Range: > 10 m
Operating time: 8 hrs
Charging time: 4-5 hrs

Factory installed.



Wireless Transducer Base



Wireless US FHR1 Transducer



Wireless TOCO Transducer

Includes:

- 1 Wireless Transducer Base
- 1 Wireless US FHR1 Transducer
- 1 Wireless TOCO Transducer

Wireless Monitoring Upgrade Kit (Aqua)

Article Number: 4/SYS120400

Operates in the 433 MHz frequency range which is suitable for underwater monitoring.

The wireless transducers offer mobility during labor, with continuous CTG monitoring. It can also be used during indoor transport situations in healthcare facilities.

Range: > 10 m
Operating time: 8 hrs
Charging time: 4-5 hrs

Factory installed.



Wireless Transducer Base (Aqua)



Wireless US FHR1 Transducer (Aqua)



Wireless TOCO Transducer (Aqua)

Includes:

- 1 Wireless Transducer Base (Aqua)
- 1 Wireless US FHR1 Transducer (Aqua)
- 1 Wireless TOCO Transducer (Aqua)

Transducers for Fetal Monitoring

Wireless TOCO Transducer

Article Number: P1271-05044

Wireless transducer (2.4 GHz) for registration of uterine contractions. Battery included.

Prerequisites:

Wireless Monitoring Upgrade Kit (3/SYS120400)

Includes:

1 Wireless TOCO Transducer



Wireless FHR1 Transducer

Article Number: P1271-05043

Wireless transducer (2.4 GHz) for registration of singleton fetal heart rate. Battery included.

Prerequisites:

Wireless Monitoring Upgrade Kit (3/SYS120400)

Includes:

1 Wireless FHR1 Transducer



Wireless FHR2 Transducer

Article Number: P1271-05042

Wireless transducer (2.4 GHz) for registration of twin fetal heart rate. Battery included.

Prerequisites:

Wireless Monitoring Upgrade Kit (3/SYS120400)

Includes:

1 Wireless FHR2 Transducer



Transducers for Fetal Monitoring

Wired TOCO Transducer

Article Number: P1224-05052

Wired transducer for registration of uterine contractions.

Cable length 2.3m

Includes:

1 Wired TOCO Transducer



Wired FHR Transducer

Article Number: P1221-05038

Wired transducer for registration of fetal heart rate.
Suitable for both singleton and twins.

Cable length 2.3m

Includes:

1 Wired FHR Transducer



Accessories for Internal Fetal Monitoring

Goldtrace Fetal Spiral Electrode

Fetal Spiral Electrode for internal fetal heart rate and FECG registration.

Article Number: CNS000004/75



FECG Legplate Adapter for Neovanta

The FECG Legplate is an adapter cable connecting a Fetal Spiral Electrode (FSE) and Skin electrode to a Fetal monitor for continuous electronic intrapartum monitoring.

Compatible with Goldtrace Fetal Spiral Electrode (FSE) and Stan S41 Maternal and Fetal Monitor.

Cable length 2.5m

Article Number: ACC300110



FECG Legplate Adapter for Philips

The FECG Legplate is an adapter cable connecting a Fetal Spiral Electrode (FSE) and Skin electrode to a Fetal monitor for continuous electronic intrapartum monitoring.

Compatible with Goldtrace Fetal Spiral Electrode (FSE) and Philips Avalon Monitors.

Cable length 0.5m

Article Number: ACC300120

Accessories for Internal Fetal Monitoring

Skin Electrode for FECG

Gel skin electrode for fetal heart rate and FECG registration.
Suitable for ST Analysis.

Single use and single packed.

Article Number:

CNS000003/600 – Box of 600 Skin Electrodes

CNS000003/30 – Box of 30 Skin Electrodes



Abrasive Paper

Abrasive pad for skin preparation before application of
skin electrode.

Single use.

Includes:

1 Box of 1500 pcs Abrasive Paper

Article Number: CNS000401/1500

IUP Adapter Cable for Utah Medical/Intran

For internal monitoring of uterine activity. Compatible
with IntranPlus IUP catheters (IUP-400, IUP-450, IUP-
500, IUP-550) from Utah Medical.

Article Number: P1263-03027

Accessories for Maternal Monitoring

3-Leadwire MEGC Cable

Leadset for monitoring of MEGC, heart rate and respiratory rate.

Article Number: P9001-00478



5-Leadwire MEGC Cable

Leadset for monitoring of MEGC, heart rate and respiratory rate.

Article Number: P9001-00477



MSpO2 Sensor

Article Number: P7002-00008

Sensor for registration of maternal pulse and oxygen saturation.
Cable length 0.9m.

Prerequisites:

MSpO2 Extension Cable (P9001-00501)

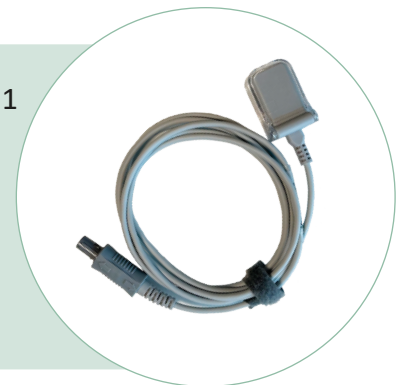
MSpO2 Extension Cable

Article Number: P9001-00501

Extension cable for MSpO2 with connector. Cable length 2.2m.

Prerequisites:

MSpO2 Sensor (P7002-00008)



Skin Electrode for MEGC Recording

Article Number: P7001-00296

Skin electrodes for monitoring of maternal ECG.

Includes:

1 Box of 25 pcs Skin Electrodes

Accessories for Maternal Monitoring



NIBP Cuff Small Adult

Cuff for measurement of blood pressure (perimeter 20.5-28 cm). Hose length 0.2m.

Article Number: P9001-00503



NIBP Cuff Adult

Cuff for measurement of blood pressure (perimeter 27-35 cm). Hose length 0.2m.

Article Number: P9001-00504



NIBP Cuff Large Adult

Cuff for measurement of blood pressure (perimeter 34-43 cm). Hose length 0.2m.

Article Number: P9001-00505



NIBP Cuff Adult Thigh

Cuff for measurement of blood pressure (perimeter 42-54 cm). Hose length 0.2m.

Article Number: P9001-00506



NIBP Cuff Extension Hose

NIBP extension hose with connector.

Hose length 3.0m

Article Number: P9001-00485

Consumables



Legplate Belt

Article Number: CNS000106

Stretch belt for the legplate.

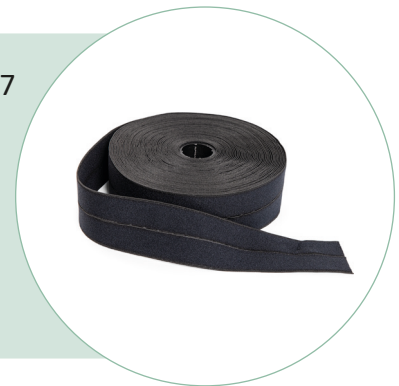
- 3 cm Wide
- Roll of 15 m
- Not made with natural rubber latex

Transducer Belt – Regular

Article Number: CNS000107

Stretch belt for the TOCO and FHR transducers.

- 5 cm Wide
- Roll of 15 m
- Not made with natural rubber latex



Transducer Belt – Wide

Article Number: CNS000108

Stretch belt for the TOCO and FHR transducers.
Provides extra comfort for plus sized mothers.

- 10 cm Wide
- Roll of 15 m
- Not made with natural rubber latex

Transducer Belt – Precut

Article Number: P2224-08001

Reusable stretch belt for the TOCO and FHR transducers.

- 6 cm Wide
- 150 cm long
- Pack of 2 pcs
- Not made with natural rubber latex



Accessories for External Maternal Monitoring

Wired Fetal Movement Marker

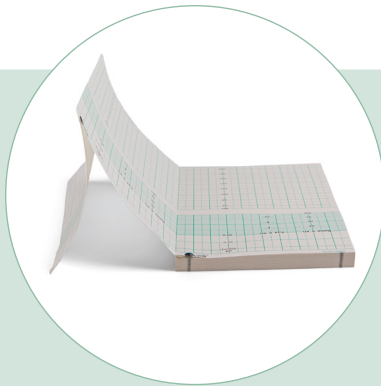
Remote with button for manual registration of fetal movements.

Cable length 2.3m

Article Number: P1221-12035



Printer Paper



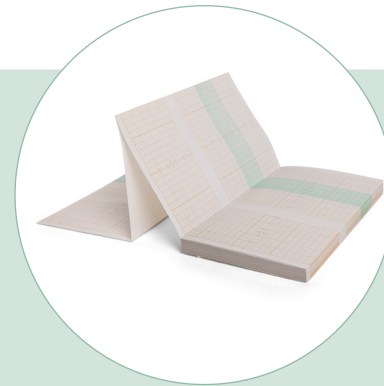
Printer Paper (CTG Only)

Printer paper with CTG grid, with 50-210 bpm FHR scale and 20 bpm per cm scaling.

Article Number: P8105-00003

Includes:

3 pcs per unit



Printer Paper (CTG and ST Analysis)

Printer paper with CTG+ST Analysis grid, with 50-210bpm FHR scale and 20bpm per cm scaling.

Article Number: P8105-00063

Includes:

3 pcs per unit

Mounting Solutions for Stan S41

Trolley

The trolley enables easy access to necessary equipment in different locations when needed, and meets various ergonomic needs with adjustable height and position options.

- Available in fixed or variable height
- Quick-release function
- Enables free positioning of the monitor
- Stable with quiet-running, easy-rolling lockable wheels and anti-static wire
- Friction-resistant tilt functionality
- A variety of accessories available



Trolley Fixed Height

Trolley with fixed height and quick-release function for the S41 monitor.

- Height: 128 cm
- Maximum storage weight: 4.5 kg
- Color: Cream white

Article Number: NVT-0002-60

- 1 Trolley fixed height
- 1 Bin
- 1 Handle
- 2 Cable management clips
- 1 Anti-static wire

Trolley Variable Height

Trolley with variable height (gas-spring assisted) and quick-release function for the S41 monitor.

- Height range: 120-156 cm
- Maximum storage weight: 6.8 kg
- Color: Cream white

Article Number: SBS120430

- 1 Trolley variable height
- 1 Bin
- 1 Handle
- 2 Cable management clips
- 1 Anti-static wire



Accessories for Trolleys

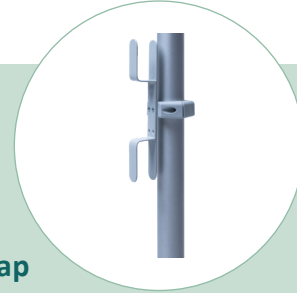


Basket

Storage for monitoring accessories such as cables and blood pressure cuffs.

Dimensions: W:32 cm D:19 cm H:15 cm

Article Number: RS-0001-24



Cord Wrap

Cord management to be mounted horizontally and vertically.

Article Number: RS-0013-03E



Chart Bin

Chart bin with quick release adapter.

Dimensions: W:36,2 cm D:8,3 cm H:22,9 cm

Article Number: WM-0001-21



Bin

Bin with removable dividers. Quick-release adapter for easy removal. Included in the trolley standard package.

Dimensions: H:7,6-12,7 cm D:30,5 cm W:30 cm

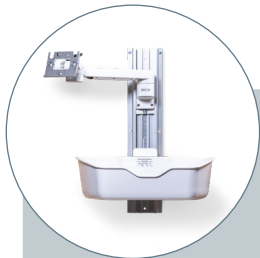
Article Number: WM-0001-22

Mounting Solutions for Stan S41

Wall Arm

The wall arm offers increased free floor space, and stores accessories a space-preserving and practical way for different ergonomic needs and room layouts.

- Available in Standard and Premium
- Quick-release function
- Lateral and vertical movement functionality and tilt function
- Available in long and short wall channel lengths
- A variety of accessories available

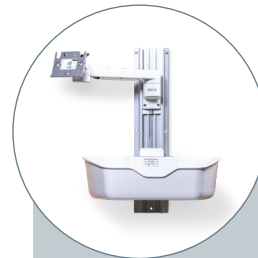


Standard Wall Arm
Short Channel

Fixed height wall arm with lateral movement and tilt function.

- Maximum extension from wall to mounting plate: 39 cm
- Wall length channel: 48,3 cm

Article Number: SBS120415/1



Standard Wall Arm
Long Channel

Fixed height wall arm with lateral movement and tilt function.

- Maximum extension from wall to mounting plate: 39 cm
- Wall length channel: 63,5 cm

Article Number: SBS120415/2

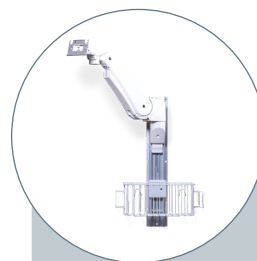


Premium Wall Arm
Short Channel

Wall arm with lateral and vertical movement (gas-spring assisted) and tilt function.

- Maximum extension from wall to mounting plate: 66 cm
- Wall length channel: 48,3 cm

Article Number: SBS120420/1



Premium Wall Arm
Long Channel

Wall arm with lateral and vertical movement (gas-spring assisted) and tilt function.

- Maximum extension from wall to mounting plate: 66 cm
- Wall length channel: 63,5 cm

Article Number: SBS120420/2

Accessories for Wall Arms



Basket

Storage for monitoring accessories such as cables and blood pressure cuffs.

Dimensions: W:32 cm D:19 cm H:15 cm

Article Number: WM-0001-18B

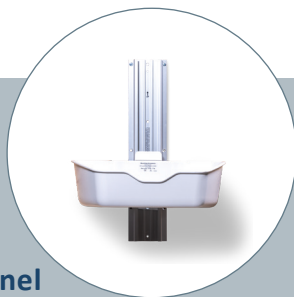


Chart Bin

Chart bin with quick release adapter.

Dimensions: W:36,2 cm D:8,3 cm H:22,9 cm

Article Number: WM-0001-23



Wall Channel

Short

Wall channel for additional storage.

Length: 48,3 cm

Article Number: WC-0002-05

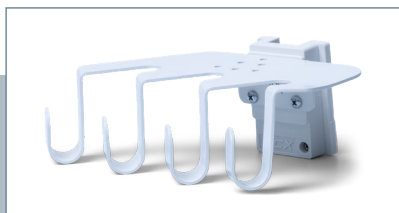


Bin

Bin with removable dividers. Quick-release adapter for easy removal. Included in the trolley standard package.

Dimensions: H:7,6-12,7 cm D:30,5 cm W:30 cm

Article Number: WM-0001-27

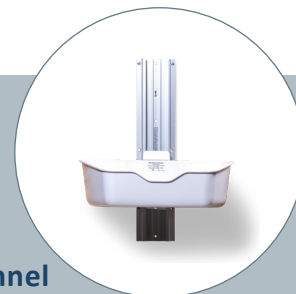


Quad 4-hook

Hook for cable management.

Maximum load per hook: 1,27 kg

Article Number: UT-0001-11



Wall Channel

Long

Wall channel for additional storage.

Length: 63,5 cm

Article Number: WC-0002-07

Softwares

Stan Viewer Live

Web application allowing its user to view ongoing CTG recordings from a remote location, e.g. a surveillance room or by a doctor on-call.

Unlimited number of client installations.

Available in English, Norwegian, Danish and Swedish.

Article Number: STW300300_R1C

Includes:

Installation Media

Stan Viewer

Software application for viewing recording files in STN file format generated by S41 systems. Software is downloaded from Neoventa website.

Included in the main unit.

Prerequisites:

Microsoft Windows

Article Number: STW110001



Instructions For Use

Language Version	Article Number
English	P2263-11060
Czech	P2263-11074
Danish	P2263-11067
Dutch	P2263-11066
Estonian	P2263-11079
Finnish	P2263-11069
French	P2263-11063
German	P2263-11062
Italian	P2263-11064
Norwegian	P2263-11068
Portuguese	P2263-11070
Spanish	P2263-11071
Swedish	P2263-11065

Service Manual

Language version	Article Number
English	P2263-11056

Quick Guides

Language Version	Article Number
English	P2263-11080
Czech	P2263-11094
Danish	P2263-11087
Dutch	P2263-11086
Estonian	P2263-11099
Finnish	P2263-11089
French	P2263-11083
German	P2263-11082
Italian	P2263-11084
Norwegian	P2263-11088
Portuguese	P2263-11090
Spanish	P2263-11091
Swedish	P2263-11085

A Better Start in Life



Norra Ågatan 32, SE-431 35 Mölndal, Sweden
+46 31 758 3200
info@neoventa.com

www.neoventa.com